



*Life Connection Mission  
Montrouis, Haiti  
Annual Christmas Catalog*



*Christmas 2021*

"This will be a sign unto You: you will find the baby wrapped in swaddling clothes and laying in a manger" (Lk. 2:12) The very thought of this Holy Night conjures up images of the lowly stable with our infant Savior surrounded by the animals. It was a powerful and deliberate plan for the Son of God to come from such a humble beginning. Yet, there are so many people in our world today who live each day in conditions just as rudimentary as the cattle stall in Bethlehem.

*"And He will be called Wonderful Counselor, Mighty God, Everlasting Father, Prince of Peace!" (Isiah 9:6)*

So as we share this special time of year with our loved ones and rejoice in the Savior's birth, let us remember our neighbors in need.

Just over five hundred miles off the coast of Florida, is the island nation of Haiti which is the poorest country in the Western Hemisphere. From hurricanes to earthquakes, we have seen communities and missions come together to help and love one another. We feel blessed to hear about these stories, and we are pleased to answer the call to do more. Life Connection Mission is a nonprofit Christian mission based in the village of Montrouis, Haiti. Although our humble mission cannot possibly address all of the needs in Haiti, we are committed to doing everything we can to ease suffering, educate children, increase the quality of life, and work toward a sustainable future for our friends in Montrouis.

We operate a variety of ministries including a feeding program, a mission school, a medical clinic, housing projects, and Christian outreach ministry. We strive to not only meet the immediate needs of those we serve, but to help create a sustainable future of promise for them in the name of Jesus Christ.

Please look through our 2021 Christmas catalog and prayerfully consider how God is leading you to help. You may honor a friend or family member with a gift by requesting a gift card (see page 7). What a wonderful way to share the real "reason for the season".

To all who help us continue to serve our friends in Haiti, in the many ways, thank you from the bottom of our hearts. May the peace of Christ which passes all understanding continue to be with you. Have a blessed holiday season!

On behalf of the board of directors, & mission staff of Life Connection Mission,  
we wish you and your families a very Merry Christmas!  
Blessings, good health, and much happiness in 2022.



# Table of Contents



Gift	Suggested Donation	Your Donation
<b>Feeding Programs</b>		
Rice for Christmas (pg.4)	\$40 (rice)/\$60 (beans)	
School Feeding (pg. 4)	\$60/\$120/\$600	
Community Feeding (pg. 4)	\$75	
<b>Community Outreach</b>		
Provide Farm Animals (pg. 5)	\$30/\$80	
Help Build a Home (pg. 5)	\$160/\$8,000	
Help Build a Well (pg. 6)	\$600/\$1,500/\$3,000/\$6,000	
<b>Christian Ministry</b>		
New Life in Christ Church (pg. 4)	\$30	
<b>Medical Assistance</b>		
Medication/Supplies (pg. 6)	\$25/\$50/\$100/\$1,000	
<b>Education</b>		
Backpacks for Christmas (pg. 5)	\$45	
Tablet Initiative (pg. 5)	\$260	
School Improvement (pg. 6)	\$40	
<b>General Mission Needs (pg. 5)</b>	\$20	
<b>Total</b>		



## Mail Donations to:

### Life Connection Mission

23 Grey Pebble Ct. Germantown, MD 20874

301-370-6426 dale@lifeconnectionmission.org

301-518-4787 christianne@lifeconnectionmission.org

<https://www.lifeconnectionmission.org/product/backpacks-rice-and-beans-for-christmas/>





### Rice for Christmas

It's a staple of the Haitian diet, and a staple for our mission outreach, rice. Jesus said, "For I was hungry and You gave me something to eat." Help us provide every child with a bag of rice this Christmas. Share the love of Christ, and bring hope to our neighbors, one bag of rice at a time.

**Price: \$40.00**

(add beans: \$ 60.00)



### School Feeding Program

Our school feeding program provides a nutritious meal to every student each school day. Help us continue to offer free school meals with your gift.

Feed 5 Students for a Month	\$60
Feed 10 Students for a Month	\$120
Feed 50 Students for a Month	\$600



### Community Feeding

A significant percentage of the Haitian population is undernourished. With your contributions, we can host a feeding program for those members of the community most in need (children and elderly).

**Suggested donation \$75**



### New Life in Christ Church

The New Life In Christ Church, connected to the mission school, helps the community grow in their love for Christ. Your support can aide the Church's efforts to share the Gospel, improve the Church facilities, and reach their neighbors in Montrouis.



**Suggested Donation:**  
**\$30**

### Backpacks for Christmas

LCM will pack a Backpack for a school child. Backpacks include a variety of needed supplies (bar soap, toothbrush, toothpaste), fun treats (coloring books, candy, soccer ball, jump rope), school supplies, and clothing. Help us provide every child with a Christmas gift!

**Suggested Donation: \$45**



### General Mission Needs

The mission is always in need of supplies to support our efforts-whether it would be tires for the truck, soap for the clinic, printer ink for the school, or gas for the generators and more. These items are not always first in mind, but always needed to keep our mission running strong.

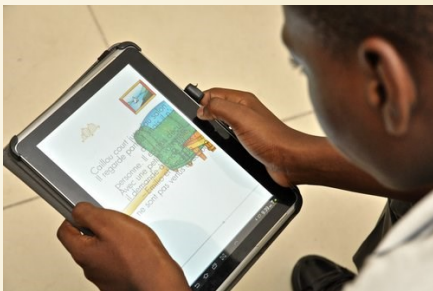
**Suggested Donation: \$20**



### Help Build a Home

It's part of the American dream- home ownership. Many of our brothers and sisters in Haiti, however, must make due in one-room structures made from palm leaves and tin roofs with their dirt floors. For approximately \$8,000, we can build a dry, sturdy, well-constructed two-room house with a front porch. You can share the cost of making a dream a home a reality for one family.

2% of the Project	\$160
Complete Project	\$8,000



### New Learning Initiative-Tablets to enhance and support learning

Just imagine the power that we unleash with tablets, expanded solar power, and supported teaching methods!

We launched the pilot program last year at a cost of approximately \$20k and provided tablets for students in grades 10 and 13. We hope to maintain this program and grow so that all high school students will have access to a tablet/ chromebook to complete additional assignments and access the greater knowledge available with technology in hand.

**Suggested donation: \$260**



**Any donation is appreciated; however, each device, protective cover, and a portion of charging and secure storage cart costs approximately \$260.**





### Provide Clean Water– Help Build a Well

Many residents of Montrouis do not have access to clean water and basic sanitation services. They must rely on the local river and streams to drink, wash, and more. Your donation can help us dig a well and provide water access for a local family in need.



10% of the Project	\$600
25% of the Project	\$1,500
50% of the Project	\$3,000
Complete the Project	\$6,000



**Suggested Donation:**  
**\$40**



### School Improvements

“School is a building which has four walls with tomorrow inside.” We hope you believe, as we do that education is a critical first step in breaking the bonds of poverty and insuring a brighter tomorrow for Haiti’s youth. Help us maintain the exterior of our school building and continue to provide a positive learning environment on the inside.



### Medication/Supplies

What better way to celebrate the season of giving than to help give the gift of life? Our doctors and nurses provide critical medical care in our community where there are no hospitals, no other clinics, and nowhere else to turn. Help support God’s healers!

Treat 5 Patients	\$25
Treat 10 Patients	\$50
Treat 25 Patients	\$100
Treat 200 Patients	\$1,000





**HOW TO ORDER:**

Please select your gifts from the catalog and fill in the amount of your donation on this order form. Mail your completed order form and gift card request to **Life Connection Mission, 23 Grey Pebble Ct., Germantown, MD 20874**. Please include a check payable to "Life Connection Mission."

For additional donation opportunities, please visit [www.lifeconnectionmission.org](http://www.lifeconnectionmission.org).

**Gift Card 1**

Gift of: \_\_\_\_\_ Amount : \_\_\_\_\_

NAME OF PERSON TO RECEIVE CARD  
\_\_\_\_\_MAILING ADDRESS  
\_\_\_\_\_

CITY

STATE

ZIP CODE  
\_\_\_\_\_

GIVEN BY (PLEASE PRINT YOUR NAME AS YOU WOULD LIKE FOR IT TO APPEAR)

☐

"In Honor " Card

☐

"In Memory" Card

Name: \_\_\_\_\_

**Gift Card 2**

Gift of: \_\_\_\_\_ Amount : \_\_\_\_\_

NAME OF PERSON TO RECEIVE CARD  
\_\_\_\_\_MAILING ADDRESS  
\_\_\_\_\_

CITY

STATE

ZIP CODE  
\_\_\_\_\_

GIVEN BY (PLEASE PRINT YOUR NAME AS YOU WOULD LIKE FOR IT TO APPEAR)

☐

"In Honor " Card

☐

"In Memory" Card

Name: \_\_\_\_\_

## From Christmas' past...



*Sharing the love of Christ with our Haitian neighbors at this blessed time of year.*

Life Connection Mission  
23 Grey Pebble Ct.  
Germantown, Md 20878  
Phone: 301-370-6426  
[Dale@lifeconnectionmission.org](mailto:Dale@lifeconnectionmission.org)  
[www.lifeconnectionmission.org](http://www.lifeconnectionmission.org)